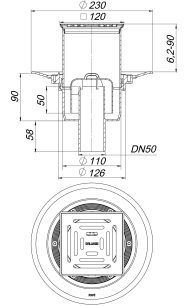


## floor drain type 40 SE 12, DN 50, 120 x 120 mm

Part number: 405067  
 GTIN: 4001636405067  
 Rebate group: 3



### Description:

floor drain type 40 SE 12, DN 50, 120 x 120 mm  
 conforming to DIN EN 1253  
 outlet DN 50 vertical

#### specification

- height adjustable grating E 12
- removable trap insert, 50 mm water seal (conforming to DIN EN 1253)
- temporary blanking plate

#### material

polypropylene  
 frame 304 stainless steel, 120 x 120 mm, grate 304 stainless steel, load class K 3 (300 kg)

The outlet connector can be supplied in ABS to suit British Standard sizes and PE-HD conforming to DIN EN 1519. Please enquire.

Fire protection system 2 (Part No. 515025) applicable.

### Flow rates tested to DIN EN 1253:

Nominal diameter	Product standard	Min. flow rate according to norm	Water level according to norm
DN 50	DIN EN 1253	0.80 l/s	20.00 mm

### Spare parts:

405128 Floor drain body type 40 S, DN 50

501080 grate E 115, 115 x 115 mm

495341 frame ECS 12, 304 stainless steel, 120

590275 Bell trap for floor drain body type 40